



Climate Cycle
2014 Interim Report





The mission of Climate Cycle is to *inspire students to green their world*. Through our Sustainability Assembly Series, bike-powered classrooms, school gardens, solar energy projects, and annual bike ride/walk we are educating, activating, and growing a new generation of climate action leaders.

We are a 501(c)3 non-profit organization that currently engages over 22 schools and have reached over 25,000 students across the City of Chicago.

As we move into 2015 and environmental concerns continue to grow, we are reaching out with a passionate sense of urgency to new and old supporters to help us achieve our short and long-term goals of empowering this generation of students to lead, innovate, and succeed in a sustainable world.



Table of Contents

- 1 Letter from the Executive Director
- 2 Who We Are
- 3 The Cause
- 4 School Partners
- 5 Schools Programming/Grants
- 6 Sustainability Assembly Series
- 7 Plastic Challenge
- 8 Programmatic Impact
- 9 Student Impact
- 10 Ride/Stride to Recharge
- 11 Climate Cycle Soirée
- 12 Income & Expenditures
- 13 Donors
- 14 Corporate & Foundation Supporters
- 15 Thank You



Clean.
Energy.
Movement.

*"I urge you all to participate
in and support Climate Cycle."*

U.S. Secretary of Education
Arne Duncan



Letter from the Executive Director



Climate Cycle completed its first green schools project on April 15th, 2009. That day, the inverter switched on for a 1.2 kW solar installation on Chicago's South Side at Perspectives Math and Science Academy. A momentous "Solarbration" among the school, community and corporate stakeholders who made this groundbreaking project possible followed. Fourteen solar installations later, the scope of our green schools projects has blossomed into an array of efforts including our Sustainability Assembly Series, community gardens, pedal-powered classrooms, the Plastic Challenge and much more.

From the beginning, our success has been propelled by an energetic core of community members and schools who believe in the importance of sustainability for our students' future. All told, Climate Cycle has procured 65+ green schools projects across 22 schools with a combined enrollment of 23,000 students, and presented to over 25,000 students on the importance of sustainability and urgency of the climate crisis along with solutions and opportunities to address it.

A key activation point for student and community involvement has been our annual ride/walk. Climate Cycle's inaugural Ride/Stride to Recharge was on May 9th, 2009. Since that time, over 2,500 participants have raised over \$450,000 in pledges, plus an additional \$250,000 in corporate sponsorship. Students have played a critical role in the event, with a combined total of 1,500 student riders, walkers, and volunteers. Through this model, the message and the means become one as the pollution-free activities of biking and walking make possible a myriad of sustainable school and student based projects. We see great potential in continuing to build upon this collaborative model of galvanizing diverse grassroots efforts alongside the support of foundations and corporations who care.

This past school year marked an exciting crossroads for Climate Cycle during which we launched a *Sustainability Assembly Series* with four of our partner schools. Three separate school assemblies systematically educate students on our shared environmental challenges, solutions, and the rich history of social movements in America that precipitate the subsequent calls to action to green both their own lives and school. In its first year the program reached 2,500 students and was combined with multiple curricular facets throughout the school year. The series was also responsible for growing the number of students and teachers who participated in 2014's Ride/Stride to Recharge by over 50%.

Whether as a donor, volunteer and/or participant, we hope you'll consider joining us and supporting these groundbreaking initiatives.

Joey Feinstein
Joey Feinstein
Executive Director



Who We Are

Staff



Joey Feinstein,
Executive Director



Nancy Goldstein,
Secretary
Founder and Chief
Strategist,
Compass(x) Strategy



Elizabeth J. Rublev,
Operations and
Communications Manager



Nancy Rich,
General Counsel
Partner,
KattenMuchinRosenman LLP



Hanh Pham,
Event Producer



Matt Cardoni,
Board Member
Senior Account Manager,
AdGooroo – A Kantar Media
Company

Board Members



Bess Celio,
President
Trustee,
The Lumpkin
Family Foundation



Holly Messick,
Board Member
Executive Director,
A Giving Heart
Foundation



Ethan Austin,
Board Member
President and Co-
Founder,
GiveForward



Sean Moran,
Board Member
Founder and
Principal,
Newgrange
Development LLC



Our Headquarters, the Green Exchange

We're nestled in the nation's largest sustainable business community at The Green Exchange, a LEED Platinum Certified building. Some features include:

- State of the art green roof
- High efficiency heating and cooling that reduces building energy by 22%
- 41,239 gallon rain cistern to use rain water for irrigation
- Recycling system with sorting on all 5 floors.





The Cause

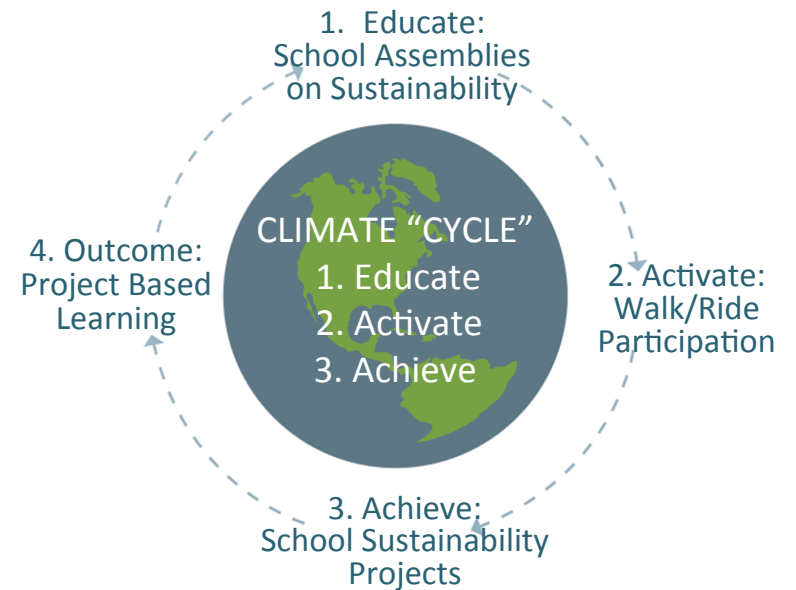
Educate

Activate

Achieve

Climate Cycle’s mission is *inspiring students to green our world*. We are a 501c(3) non-profit organization which was founded in 2008 out of a concern that today’s youth lacked the tools necessary to respond to global warming or benefit from the emerging green economy. Today, Climate Cycle leads the charge in catalyzing environmental education in schools and communities by developing young leaders in sustainability.

We envision a world where every student is educated on the importance of sustainability and has ample opportunity to take action. Our approach is to *educate* large numbers of students about sustainability through school assemblies and project based learning, inspire them to *take action*, and subsequently *achieve* positive environmental results through green projects procured at their school. Through this, Climate Cycles creates opportunities for students to be a part of the solution while enriching their education.



Sustainability Assemblies

25,000+ students reached to date

Ride/Stride to Recharge

1,500 student participants & volunteers

Green Schools Projects

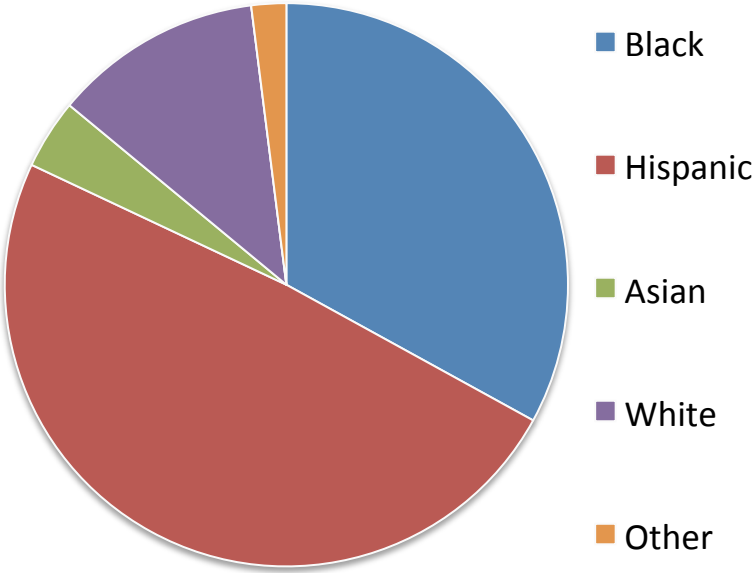
65+ projects, 22 schools, total enrollment 23,000 students



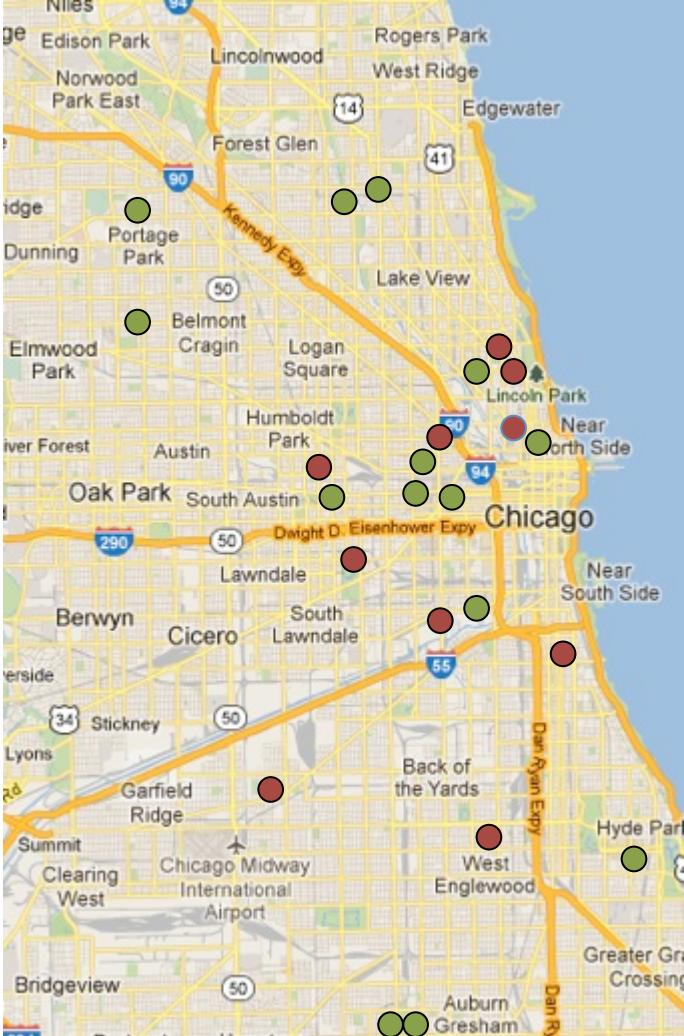
School Partners

Climate Cycle is dedicated to working with schools from across our area. With a population that is 73% low income and 87.4% non-white students, our school partners represent the diversity of Chicago.

Ethnicities Served



Schools in Our Network



- Elementary
- High School



Schools Programming

Three initiatives comprise our schools programming: Sustainability Assemblies, the Ride/Stride to Recharge and Green Schools Grants. Green Schools Grants are described below.

Solar Energy Arrays: With solar arrays, schools begin meeting their energy needs with renewable energy sources. This provides clean energy to school buildings and teaches our next generation about the importance of sustainable living. These grid-tied structures begin as 1kW demonstration systems that allow anyone to monitor the output of the system in real time online. The schools chosen will either receive photovoltaic solar panels or a solar thermal energy unit. All installation will be done free of charge, using money from our Ride/Stride to Recharge participant pledges, state rebates and grants.

Bike-Powered Classrooms: Bike generator systems allow riders to power devices in their own classrooms while also learning about energy as it relates to the environmental movement. The program provisions two to ten bike powered systems which can be used in one classroom or several across the school. These are regular bicycles using pedal-a-watt systems to transfer energy, and 51 amp-hour AGM batteries which can supply 1500W of electricity.

Waste Reduction: Waste reduction programs focus on reducing consumption of non-renewable products, disposing of classroom and lunch materials, and understanding how the materials we use affect our planet.

School Gardens: This program helps students understand the natural landscape of Illinois as well as the food production process by experiencing it firsthand. These raised-bed gardens can be native plants, food gardens, or a mix of both. Climate Cycle works with the schools to help determine the best size and scope of the gardens.

Portable Solar: Portable solar panel kits are provided to students for a hand- on experience with solar energy. The 3.4W systems include panel, battery and adapters, and will power portable electronics like cell phones and iPads, while providing project based learning opportunities for students to see firsthand how solar energy works. These portable panels can be mounted to backpacks, bicycles and handbags, and enable students to tap into clean solar energy wherever they go.



Sustainability Assembly Series

Climate Cycle's Sustainability Assemblies educate students on environmental challenges and solutions while delivering a call to action. The rich history of social movements in America is integrated to illustrate the cultural precedent for such action to be taken. To date, over 25,000 students have been reached.

Our Sustainability Assemblies have two primary goals: educate students on the climate crisis and solutions, and offer ways to take action for those students ready to do so.

Presentations are customized to be interdisciplinary and culturally relevant to specific student populations while highlighting environmental efforts happening at their school.

Single Presentations

Introductory presentations enable students to get a broad brushstroke understanding of the climate crisis and sustainability at large, current climate trends, what the causes of the problem are, and what can be done to address it. Solutions both at home and through Climate Cycle are introduced, including the Ride/Stride to Recharge.

Presentation Series

The three part presentation series is available for schools that want students to have a more in-depth understanding of sustainability and the issues covered in the first presentation (see above) along with an increased emphasis on solutions, building a team for the Ride/Stride to Recharge, and how to get others to support their efforts.

Customization

Whenever possible, we seek to customize presentations so that specific school sustainability efforts are highlighted. Whether these are Climate Cycle driven or otherwise, highlighting such successes is a great way to spur further action. Additionally, science, history, math and music are all incorporated to create an interdisciplinary approach that maintains student interest and engagement.



Plastic Challenge

Climate Cycle's Plastic Challenge is a 4-week (or longer) program in which students are educated on the plastic consumption/waste crisis through assemblies and classroom exercises, and subsequently empowered to take action around the issue within their own lives.

Designed for both primary and secondary school audiences, the Plastic Challenge teaches students about a real world problem affecting all of us and connects them to the tools necessary to take action and achieve results.



Similar to the Sustainability Assembly Series, while the basic structure of the Plastic Challenge remains consistent from school to school, optional exercises and enrichment opportunities are available to augment each stage of the program after the first week.

Math and science activities, graphing exercises, organizing a zero-waste lunch day, making a video or art installation, and more can be a part of such customization.



Programmatic Impact



To date, we have partnered with 22 schools. Interest in our programming exceeds our current capacity. We look forward to expanding to meet demand.

School Name	Enrollment	% Low Income Students	Presentation(s)	Ride/Walk Participants	Project Participants	Solar	Pedal-Power	School Garden	Portable Solar	Other
Curie Metro High School	3,692	83.00%	15,400	450	200	3	1		1	3
Perspectives MSA	561	87.00%	250	20	100	1		1		2
Polaris Elementary	380	93.00%	200	100	70	1				2
Lincoln Park High School	2,150	56.00%	500	60	5	1				1
Waters Elementary	556	63.00%		0	0	1				1
Lindblom Elementary	878	63.00%		5	0	1				
Talcott Elementary	544	80.00%		0	0	1				
Al Raby High School	586	95.00%	500	75	15	1				2
Walter Payton High School	908	55.00%		50	15	1				3
Lincoln Elementary	742	14.00%		10	4					1
Smyser Elementary	486	79.00%	1,000	10	150	1		1		2
Francis Parker School	912	N/A	500	40	30	1				
Westinghouse High School	554	78.00%	250	15	75		1			1
Ray Elementary	630	43.00%		15	20		1			1
Whitney Young High School	2,160	39.00%	100	20	10					
Locke Elementary	1,100	79.00%	1,400	110	5	1	1		1	2
Portage Park Elementary	900	N/A	500	12	0					1
Budlong Elementary	900	78.00%	200	0	4					1
Chicago Scholars	N/A	N/A	50	100						
Junior State of America	N/A	78.00%	400	N/A	N/A					
Kellogg Elementary	270	45.00%	95	N/A	N/A					
Sutherland Elementary	744	22.00%	300	N/A	N/A					
Juarez Community Academy	1,805	94.00%	2700	N/A	N/A	1				1
Ogden Elementary	727	21.00%	500	N/A	N/A					1
Ogden Int'l High School	747	42.00%	350	N/A	N/A					
TOTAL	22,932		25,195	1092	703	15	4	2	2	31



Student Impact

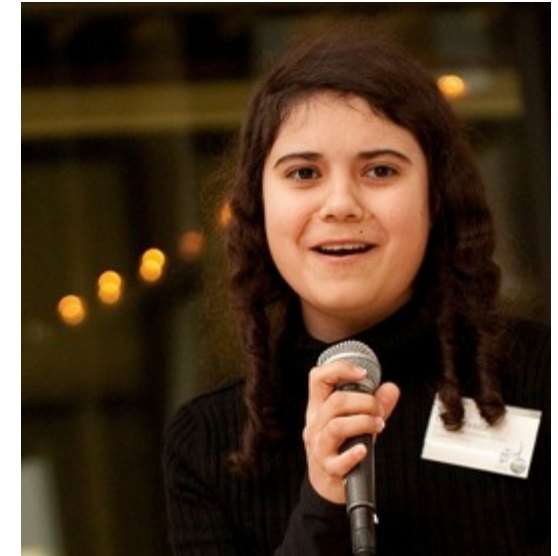


Daniela Fernandez (right) meets former President Bill Clinton.
© Daniela Fernandez

"Climate Cycle has played such an important role in my life in shaping my passion for environmental sustainability, developing my leadership in encouraging my peers to get involved and inspiring me to pursue a career in government to advocate for environmentally friendly policies. Climate Cycle not only opened my eyes to the consequences of our actions but it made me realize how a group of committed individuals can really make a difference in our fight to save our planet." – *Daniela Fernandez, Georgetown Sophomore, Oceans Conference Organizer, Climate Cycle Student Alum*

Climate Cycle's grand aspiration to involve even the youngest students to help reduce our environmental footprint taught me that anyone can make a change with some encouragement. My generation is in charge of tending to the future of our planet, and Climate Cycle was my motivation to join in being the change. That's why I bike everyday, because Climate Cycle has taught me that even just one person can have an impact on our environment.

– *Yadid Gutierrez, Curie Metro High School Senior*



Yadid Gutierrez speaks at our 2014 Soirée.
© Laine Heuer

Climate Cycle inspires us every single day to green our world. We're really grateful to have you here. To quote the Lorax: "Unless someone like you cares a whole awful lot, nothing is going to get better. It's not." – *Viviana Favela, Lane Tech College Prep Freshman*



Viviana Favela uses a solar charger kit awarded from Climate Cycle to charge her phone. © Brad Parker

Ride/Stride to Recharge

The Ride/Stride

The efforts of over 650 participants and volunteers together with support from Motorola, CITYTECH, Surf Sweets, Clif Bar and Capital Group, raised over \$80,000 in the 6th Annual Ride/Stride to Recharge! The event brought together people of all skill sets and walks of life, including over 450 student participants and volunteers to help our schools go green. The event was zero-waste and included a closing festival whose sound system was driven 100% by pedal-powered generators.

Pedal-Powered Stage– Pictured below, students at the Ride/Stride to Recharge pedal-powered a bank of generators, producing enough energy to provide the audio for the closing festival, with an audience of 500.



Route Options

1.5 & 3-mile walk– Piloted in 2012 as a schools only option, this year the “Stride” was open to all participants. Growing by over 50% and accounting for over half of all participants, the Stride has huge potential for growth.



4, 10, and 20-mile rides – We offer a variety of distances to include riders of many levels. All start and end at DuSable Harbor, traversing the beautiful Lakefront Path.



Climate Cycle's Soirée

The Event

At the Greenhouse Loft in Logan Square, Climate Cycle held our 5th annual Soirée, a fundraising event featuring our Student Showcase with five environmental initiatives led by students. Our 175 guests enjoyed live music, cocktails, hors d'oeuvres and a silent auction.

Student Sustainability Showcase

The Student Sustainability Showcase is a chance for students to showcase a particular environmental initiative at their school. Students from Ogden Elementary, Locke Elementary and Juarez Community Academy presented their initial results from the Plastic Challenge – an initiative to study and reduce individual plastic use. Students from Curie Metro High School updated guests on the myriad of waste reduction projects at their school. Westinghouse College Prep returned with an update on the growth of their pedal-powered classroom projects.

Funds Raised

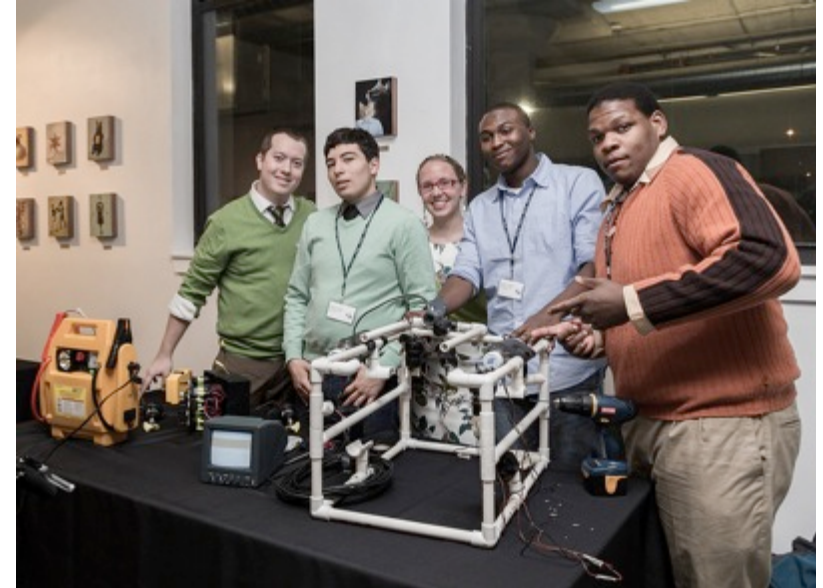
\$24,400

Sponsors

43 in-kind sponsors contributed to this year's Soirée.

Thank you!

Po Campo, REI, Chicago Blackhawks, Patagonia, Surf Sweets, Wide River Winery, City Provisions, Collective Resource, Hannah's Bretzel, Native Foods, Aveda, Laine Heuer, Frank Rico Photography, Uncommon Ground, Native Foods, Zullo's, Big Delicious Planet, The Butcher and Larder, Crumb, Mint Creek, Lou Malnati's, Metropolitan, Wild Onion Brewery, Provenance Food & Wine, Uptown Brownies, Ted the Cook, Katherine Anne, Believe Cakes, Rainforest Learning Center



Income & Expenditures



Income	8/1/13-8/1/14
Individuals (Ride/Walk)	\$71,798 *includes discontinued long ride
Individuals (Other)	\$15,478
Foundation Grants	\$48,607
Corporate Sponsors	\$25,076
Matching Challenge	\$45,000
Events (Benefits)	\$24,400
Rebates	\$10,872
Total Income	\$241,231

Expenses	8/1/13-8/1/14
Wages	\$112,045
Schools Programming Materials & Installations	\$24,600
Ride/Stride to Recharge	\$47,570 *includes discontinued long ride
Operations & Admin.	\$35,082
Fundraising (non-Soirée)	\$7288
Soirée	\$9437
Advertising/Marketing	\$705
Total Expenses	\$236,727



Corporate & Foundation Supporters

Corporate Champions

Capital Group
Chipotle
CITYTECH
Clif Bar
Compass(x) Strategy
Google
KattenMuchinRosenman LLP
Lou Malnati's
Metropolitan
Native Foods
Newgrange Development
Patagonia
PürMEDICA
Surf Sweets
Ted the Cook
Wide River Winery
WXRT

Corporate Riders

Cheiron Chicago
CITYTECH
Clayco/Forum Studio
Elevate Energy
Environmental Systems Design
Newgrange Development
Motorola
Sustnrs

Foundation Giving

The Lumpkin Family Foundation
Motorola Foundation
Seabury Foundation



Donations

Individual Champions

Abey Abraham
Keith Adams
Allan Agbay
Jenny Aguilar
Kristin Ahmadian
Olga Aleksic
Amy Allen
Tom Anderson
Gil and Kate Arias
Noelle Arkoulakis
Daniela Arroyo
Nick Aster
Ethan Austin
Jocelyn Azada
Carole Ball
Sharyl Barnes
Emily Barton
David Baum
Sandra Benedetto
Susan & Robert Bialk
John Blumenshine
Bill Bonner
Matthew Bosman
Andrea Brinkman
Phila Broich
Duong Bui
Jamie Bushman
Deborah Campbell
Suzanne Carlson
Ginger Carr
Sharon Casillas
David Castro
Bess Celio

Yogan Chavez
Jacob Cheney
Evelyn Claudio
Fanny Clonch
Joshua Coffey
Jody Cooley
Dave and Debbie
Craig
Shane Crone
Nicole Currie
Stephen Daniells
Rochelle Davis
Hoa Do
Kenneth Dobert
Jeremy Downs
Kim Duncan
Kelly Dunnavant
Aaron Durmbaugh
Shelly Dutler
Andersen
Jonathan Eig
Robert Eiseman
Christina Elmore
Karen and Doug
Elmore
Nancy Eriien
Christine Esposito
Anne Evens
Steve Ewert
Jenne Farley
Ken Faulkner
David Feinstein
Joey Feinstein
Brandon Ferris
Susan Fickling-
Munge

Lara Field
Ben Fischer
Michael Fowler
Laurie Foy
Charles Frank
Lee Frausel
Jackson Freedman
Tim Frick
Adam Friedman
Amy Futterman
Peter Gagne
Michelle Garber
Araceli Garcia
Wanda Garcia-
Gonzalez
Stephen George
Ben Gershuny
Motorola Mobility
Foundation
Corinne Golden
Karen Goldstein
Nancy Goldstein
Evelyn Gonzalez
Sara Goold
Nancy Gray
Louis Greifenstein
Erez Gurari
Mom and Dad Haase
Donna Haggerty
John Haggerty
Seth Hanau
George Haralambakis
Jim Harger
Andrew Heckman

Thomas Heineman
Chris Helmick
Julian Hernandez
Marcelino
Hernandez
Paul Hibbs
Nina Hike
Amy Hoffmann
Mike & Linda
Hostetler
Seth Hostetler
Tracy Huang
Mark Jackson
Evan Jahn
Julie Jahn
Gloria Jaramillo
Mike Johnson
Bojan Jovanovic
Doreen Kaminski
John Karnuth
Danielle Kazakos
Zack Kelsey
Ahmmed Khalil
Joon Kim
Kyle King
Michael Kneafsey
Deborah Koch
Marcy Komocsar
Douglas Krakau
Kathy Kritikos
Andrew Kulek
Jeff Kurt
Dariusz Kuser
Geir Kvaran
Yuri Lane
Steven Lazarevic
Milja Lazarevic
Joanne Lindley
John Llewellyn
Richard Longnecker
Eya Louis
Juan Luna

Kristin Lund
Connie Ma
Dennis MacDonald
Brian Madurzak
Joe Manarik
Leonard Marchese
Nery Marquez
Santiago Marquez
Jeremy Martin
Patricia Martin
Luis Martinez
Aidan McCarthy
Rob McCloskey
Rachel McGee
Ryan McGuire
John Mcshea
Marsha Meeks
Holly Messick
Veronica Miklusicak
Margaret Moore
David Morris
Michael Mucci
Michael Muller
Annie Murray
Marina Nandapurkar
Janice Neitzel
Jen Nemrava
Renee Nerney
Caroline Nguyen
Mary Norris
Thaddeus Nowak
Deborah O'Brien
Laura O'Gara
Dawn Oswald
Michelle Otte
Daniel Owens
Caroline Pakenham
Esther Paradero
Joanne Parker
Stephen Parlier
Brent Pelton

Phillip Perry
Pamela Pettibone
Anna Pham
Hieu Pham
Huy Pham
Suong Pham
Yen Phan
Jackie Pigeon
Erin Potter
Holly Pribble
Don Price
Conrad Przytula
Daniel Pulia
Rena Pulido
Matthew Purdon
Joseph Quillin
Natasha Quinn
Shirin Rezania
Ramos
Julie Ranahan
Gabriela Reyna
Ed Reynolds
Nancy Rich
Delilah Rivera
Adriana Rodriguez
Rebecca Rosen
Peter Royal
Ida Rubin
Anne Ruiz
Lien Russell
Jennifer Salen
Dale Salzman
Ernest Sanders
Ana Santana
Elizabeth Santana
Jeff Schams
Paul Scherer
Richard Schillo
Mira Schuett
Sue Shekut
Paul Sheldon
Scott Sherman

Greg Smith
Joel Smith
Lisa Smith
Tae Won Smith
Brian Solem
Sonia Solla
Jennifer
Spaulding
Spencer
Foundation
Marya Spont-
Lemus
Linda Stewart
Matt Tahja
Linda Tammen
Mike Tancredi
Faizan Tanvir
Anthony
Tarakdjian
Helen Thompson
Charles Threlkeld
Andrew Tran
Janet Van Bergen
Jasmine Vasquez
Christina
Velazquez
Mylinh Vo
Mary Waggoner
Natalie Wagner
David Warner
Audrey Wennink
Bob Wesolowski
Michelle
Wilkinson
Diane Wilson
Deborah Wolen
Katrina Wyss
Michael Wyss
Aaron Zuege
Gene Zurawski

Thank You

Our programming is only made possible by our amazing network of volunteers. Thank you to each and every one who has helped, assisted, and furthered our mission. We couldn't do it without you.



Key Personnel

Joe Darnaby

Laine Heuer

Hanh Pham

Ken Mick

Mary Peplinski

Frank Rico

Whiley Rubin

Richard Seaman

Lisa Spewak

Claire Staszak

Volunteers

Linu Abraham

Jeff Allen

Cielo Almaguer

Lauren Anderson

Courtney Armstrong

Nikki Ashkin

Conway Bennett

Tommy Bilbo

Elihu Blanks

Cardale Brinson

Chante Brown

Roman Bryant

Dejerea Calhoun

Lizbeth Carrazco

Miguel Castaneda

Marc Cauinian

Madhav Chakravarthy

Nick Chavez

Scott Claggett

Sam Clifford

Chad Codak

Kendra Codak

Daniel Conrad

Kaylynn Couch

Brittany Crawford

Elizabeth Cruz

Allison Day

Tina Delacruz

Charles Donegan

Erika Enriquez

Tiffany Finke

Kristen Fisher

James Flora

Jake Fray

Gary Grice

Myles Harris

Kathy Heim

Lorna Henson

Leslie Hernandez

Saul Hernandez

Jared Hocking

Christie Hoyt

Carly Hurwitz

Samantha Jackson

Alexandria Johnson

Liz Kabulski

Andrea Kaspryk

Katie Kett

Tom Kiehn

Cassandra Kubes

Allan Lake

Alena Land

Derrick Lewis

Vid Linas

Yonetta Littlejon

Amairani Lopez

Rosy Lugo

Jad Lutek

Zeus Martinez

Kathy McNulty

Meredith Messerle

Ken Mick

Montoria Miller

Tomas Miniotas

Bobby Mitchell

Dennisha Mitchell

Kaylan Moore

Justin Neal

Darren Orr

Guadalupe Ortega

Lana Panitch

Karina Pantoja

Janet Pastorello

Meera Patel

John A. Peplinski

John M. Peplinski

Joy Peplinski

Mark Peplinski

Virginia Peplinski

Karina Perales

Jacob Peters

Xia Pipkins

Tameka Pope

Jaqui Powell

Liz Roberts

Jessie Rochon

Paris Rodgers

Ruth Rosas

Valerie Ruiz

Kathy Schubert

Richard Seaman

Marshall Shen

Golzar Shobeiri

Karina Soto

Tyler Spence

Lisa Spewak

Marya Spont-Lemus

Luke Staszak

Lilly Strieder

Jaime Stubbs

Anyi Tapiero

Andrew Tran

Phil Trimble

Igna Tuinylaite

Shantel Turner

Josue Velazquez

Beth Voitik

Ashley White

Yvonne White-Morey

Jessika Williams

Evelyn Wisniewski

Taryn Wood

Jazmine Woodall

Ben Xu

Kwasi Yeboah

Jenny Youngman

Lilah Zajac

Hanna Zarate

Andrea Zenobi

Yohan Zupkus





Join the Clean. Energy. Movement.
www.climatecycle.org